

Scaled data based on original data using

LM-41-14 Approved Method for Photometric Testing Of Indoor Fluorescent Luminaires

Test Report Prepared for

Cooper Lighting Solutions

(formerly Eaton)

Brand: CORELITE

Report Number: 26366

Luminaire Tested: **I2-WL-3T5-1C-UNV-04**

Issue Date: 3/3/2020

Test Information

Test Method: LM-41-14
Report Number: 26366
Test Lab: LIGHTING SCIENCES, INC.
Issue Date: 3/3/2020
Manufacturer: COOPER LIGHTING SOLUTIONS (FORMERLY EATON)
Product Line: CORELITE
Catalog Number: I2-WL-3T5-1C-UNV-04
Description: WITH WHITE INTERIOR AND FROSTED PLASTIC LENS

Light Source: THREE PHILIPS 54 WATT T5 LAMPS

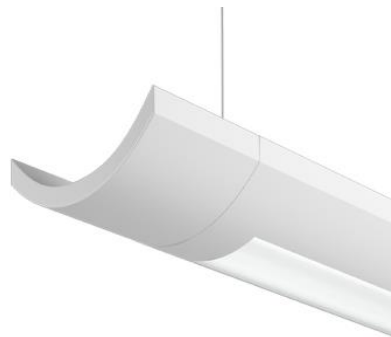
F54T5/835HO. LUMEN RATING = 4500 LMS.

Ballast/Driver: -

Summary

Lumens per Lamp: 4500 (3 lamps)
Luminaire Lumens: 12638.7 lumens
Efficiency: 93.6%
Efficacy: 71.6 lumens/watt
Spacing Criteria (0/90/45): 1.21 / 1.27 / 1.34
Luminous Opening: Rectangular (W 0.31' x L: 3.67' x H: 0')
CIE Type: Semi-Indirect

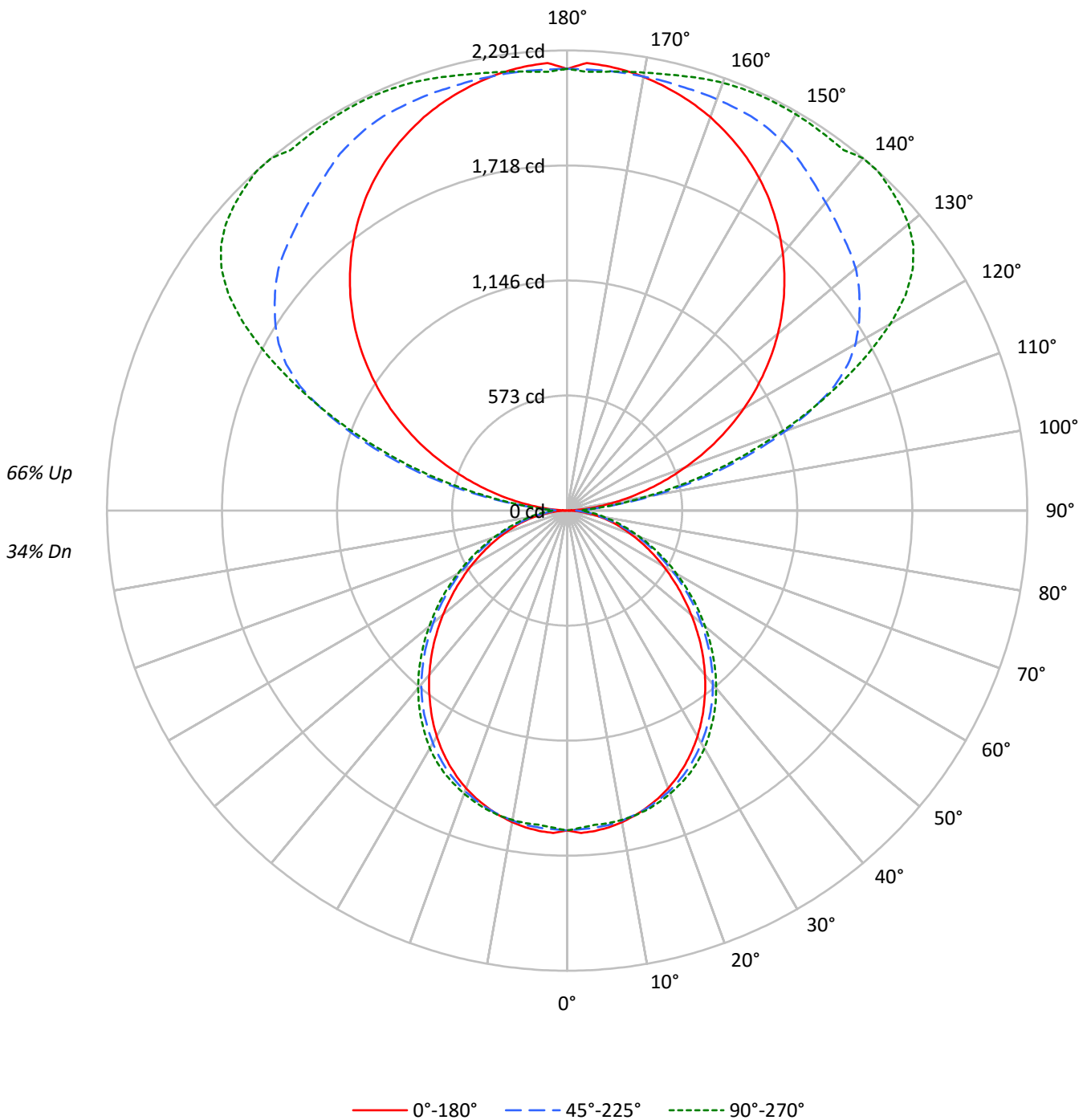
Input Watts (W): 176.5
Input Voltage (V): NR
Input Current (A_{in}): NR
Voltage Rise (V): NR
Power Factor: NR
Total Harmonic Distortion (THDi): NR
Frequency (hertz): 60
Stabilization Time: NR
Operation Time: NR
Ambient Temperature (°C): NR
Test Distance: 25 FT



TEST NUMBER: 26366

CATALOG NUMBER: I2-WL-3T5-1C-UNV-04

Luminous Intensity Polar Plot





TEST NUMBER: 26366

CATALOG NUMBER: I2-WL-3T5-1C-UNV-04

COEFFICIENT OF UTILIZATION - ZONAL CAVITY METHOD:

RF	20									20									20									20									
RC	80									50									30									10									0
RW	70	50	30	10	70	50	30	10	50	30	10	50	30	10	50	30	10	50	30	10	50	30	10	0													
RCR																																					
0	97	97	97	97	87	87	87	87	70	70	70	53	53	53	39	39	39	32																			
1	88	84	81	77	79	76	73	70	61	59	57	47	46	44	34	33	32	27																			
2	80	73	68	63	72	66	62	58	53	50	47	41	39	37	30	29	27	22																			
3	73	64	58	52	66	58	53	48	47	43	40	36	34	31	27	25	23	19																			
4	67	57	50	44	60	52	45	41	42	37	34	32	29	27	24	22	20	16																			
5	61	51	43	38	55	46	40	35	37	32	29	29	26	23	21	19	17	14																			
6	56	45	38	33	51	41	35	30	33	29	25	26	23	20	19	17	15	12																			
7	52	41	34	28	47	37	31	26	30	25	22	24	20	18	18	15	14	11																			
8	48	37	30	25	43	34	27	23	27	23	19	22	18	16	16	14	12	10																			
9	45	34	27	22	40	31	25	21	25	21	17	20	17	14	15	13	11	9																			
10	42	31	24	20	38	28	22	18	23	19	16	18	15	13	14	12	10	8																			

AVERAGE LUMINANCE (cd/sqm):

	0°	45°	90°
0°	15063	15063	15063
5°	15204	15050	14918
10°	15131	15059	15028
15°	14998	15033	15100
20°	14810	14962	15099
25°	14538	14832	15074
30°	14181	14609	14931
35°	13715	14322	14635
40°	13187	13940	14258
45°	12565	13423	13761
50°	11871	12828	13188
55°	11167	12191	12584
60°	10466	11514	11902
65°	9808	10840	11285
70°	9195	10147	10664
75°	8762	9526	10257
80°	8238	9061	10374
85°	7479	10161	13124



TEST NUMBER: 26366

CATALOG NUMBER: I2-WL-3T5-1C-UNV-04

ZONAL LUMENS:

Zone	Lumens	% Fixture	% Lamp
0°-10°	150.9	1.2	1.1
10°-20°	433.3	3.4	3.2
20°-30°	653.9	5.2	4.8
30°-40°	771.3	6.1	5.7
40°-50°	765.8	6.1	5.7
50°-60°	652.5	5.2	4.8
60°-70°	473.1	3.7	3.5
70°-80°	275.0	2.2	2.0
80°-90°	106.2	0.8	0.8
90°-100°	193.8	1.5	1.4
100°-110°	759.8	6.0	5.6
110°-120°	1285.7	10.2	9.5
120°-130°	1526.4	12.1	11.3
130°-140°	1485.1	11.8	11.0
140°-150°	1285.4	10.2	9.5
150°-160°	992.0	7.8	7.3
160°-170°	618.9	4.9	4.6
170°-180°	209.7	1.7	1.6
0°-30°	1238.1	9.8	9.2
0°-40°	2009.4	15.9	14.9
0°-60°	3427.7	27.1	25.4
0°-90°	4282.0	33.9	31.7
90°-120°	2239.3	17.7	16.6
90°-150°	6536.1	51.7	48.4
90°-180°	8357.0	66.1	61.9
0°-180°	12638.7	100.0	93.6

CANDELA DISTRIBUTION:

	0°	22.5°	45°	67.5°	90°	Flux
0°	1592	1592	1592	1592	1592	
5°	1601	1588	1585	1587	1571	152
15°	1531	1526	1535	1549	1542	432
25°	1393	1399	1421	1444	1444	641
35°	1188	1203	1240	1267	1267	742
45°	939	957	1003	1030	1028	724
55°	677	697	739	762	763	606
65°	438	450	484	503	504	435
75°	240	237	261	276	281	254
85°	69	70	94	114	121	73
90°	3	23	46	66	71	9
95°	89	166	159	156	150	105
105°	428	743	800	767	749	453
115°	823	1090	1469	1512	1503	813
125°	1198	1391	1778	2034	2102	1070
135°	1527	1672	1939	2189	2272	1177
145°	1799	1886	2070	2209	2267	1125
155°	2006	2041	2166	2244	2279	925
165°	2145	2140	2186	2220	2240	606
175°	2223	2195	2198	2191	2193	211
180°	2199	2199	2199	2199	2199	



TEST NUMBER: 26366

CATALOG NUMBER: I2-WL-3T5-1C-UNV-04

CANDELA DISTRIBUTION (FULL):

	0°	22.5°	45°	67.5°	90°
0°	1592.1	1592.1	1592.1	1592.1	1592.1
2.5°	1606.8	1594.2	1588.0	1591.4	1580.1
5°	1600.9	1588.2	1584.7	1587.4	1570.8
7.5°	1590.7	1579.5	1579.0	1580.5	1569.8
10°	1575.0	1565.6	1567.5	1573.1	1564.3
12.5°	1555.2	1547.5	1552.3	1563.8	1555.2
15°	1531.2	1526.0	1534.8	1549.0	1541.6
17.5°	1503.2	1499.9	1512.3	1526.3	1523.0
20°	1471.0	1471.0	1486.0	1502.5	1499.7
22.5°	1434.3	1437.5	1455.5	1474.7	1472.9
25°	1392.6	1398.6	1420.8	1443.7	1444.0
27.5°	1347.6	1356.4	1380.5	1409.6	1408.0
30°	1298.1	1308.5	1337.2	1367.3	1366.7
32.5°	1244.5	1257.2	1289.4	1319.0	1318.2
35°	1187.5	1202.9	1240.0	1267.1	1267.1
37.5°	1128.8	1145.2	1186.4	1212.6	1213.1
40°	1067.7	1084.9	1128.7	1154.4	1154.4
42.5°	1003.8	1022.2	1066.5	1092.9	1092.9
45°	939.1	957.3	1003.2	1029.8	1028.5
47.5°	872.7	892.3	937.8	963.1	964.0
50°	806.5	828.0	871.5	896.4	896.0
52.5°	741.1	762.3	805.7	829.7	829.8
55°	677.0	697.0	739.1	762.3	762.9
57.5°	614.1	632.2	673.1	693.5	695.5
60°	553.1	569.0	608.5	627.1	629.0
62.5°	494.2	508.4	544.7	563.9	565.7
65°	438.1	449.9	484.2	502.7	504.1
67.5°	383.7	393.5	424.1	441.8	443.1
70°	332.4	338.4	366.8	383.6	385.5
72.5°	284.7	286.3	312.4	328.0	331.3
75°	239.7	237.0	260.6	276.3	280.6
77.5°	195.3	190.5	211.6	227.9	232.2
80°	151.2	147.6	166.3	185.0	190.4
82.5°	108.1	106.8	126.9	147.7	153.5
85°	68.9	69.9	93.6	114.3	120.9
87.5°	32.9	41.9	65.3	84.9	91.1
90°	2.6	22.8	45.6	65.5	71.3
92.5°	27.3	59.7	73.8	85.2	86.5
95°	89.0	165.5	158.9	156.5	149.5
97.5°	162.0	305.3	282.1	270.5	261.7
100°	244.0	461.7	442.6	411.4	397.7
102.5°	333.2	613.8	616.3	582.4	566.6
105°	427.7	743.1	799.8	767.2	748.8
107.5°	525.0	840.7	980.4	951.8	933.3
110°	623.1	925.8	1155.4	1139.4	1120.7



TEST NUMBER: 26366

CATALOG NUMBER: I2-WL-3T5-1C-UNV-04

CANDELA DISTRIBUTION (continued):

	0°	22.5°	45°	67.5°	90°
112.5°	723.1	1008.2	1322.1	1327.1	1314.1
115°	822.8	1090.5	1468.8	1512.3	1503.4
117.5°	921.0	1165.3	1576.2	1687.4	1688.0
120°	1016.2	1240.3	1657.3	1839.3	1857.5
122.5°	1108.1	1315.8	1721.8	1954.2	1997.9
125°	1197.6	1390.8	1777.9	2033.6	2101.6
127.5°	1285.3	1465.6	1830.6	2088.7	2172.1
130°	1370.1	1538.2	1875.7	2130.0	2219.1
132.5°	1450.1	1605.7	1909.2	2162.3	2249.1
135°	1527.4	1671.6	1938.7	2188.9	2271.5
137.5°	1600.1	1725.1	1970.1	2200.7	2290.7
140°	1670.7	1778.9	2002.3	2197.5	2290.5
142.5°	1736.4	1832.6	2034.2	2190.6	2261.6
145°	1798.9	1885.7	2069.8	2208.8	2267.4
147.5°	1858.8	1931.4	2105.9	2223.9	2273.2
150°	1911.8	1971.3	2130.2	2235.6	2278.1
152.5°	1961.4	2008.4	2151.4	2240.8	2279.5
155°	2006.2	2040.6	2166.2	2244.0	2279.1
157.5°	2046.6	2069.1	2172.8	2242.8	2274.4
160°	2084.8	2094.8	2179.9	2241.2	2266.5
162.5°	2117.4	2118.2	2184.2	2232.6	2254.8
165°	2145.4	2140.1	2186.4	2220.4	2239.5
167.5°	2170.5	2158.2	2191.9	2209.5	2225.5
170°	2193.0	2173.8	2194.3	2199.1	2213.8
172.5°	2210.0	2186.9	2197.7	2194.5	2204.7
175°	2222.7	2195.4	2198.3	2190.7	2193.2
177.5°	2230.2	2200.0	2197.7	2184.3	2186.6
180°	2199.4	2199.4	2199.4	2199.4	2199.4

(END OF REPORT)